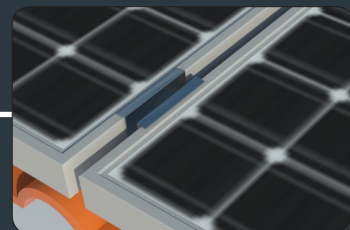
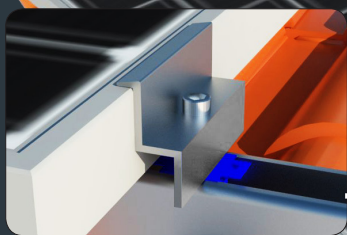
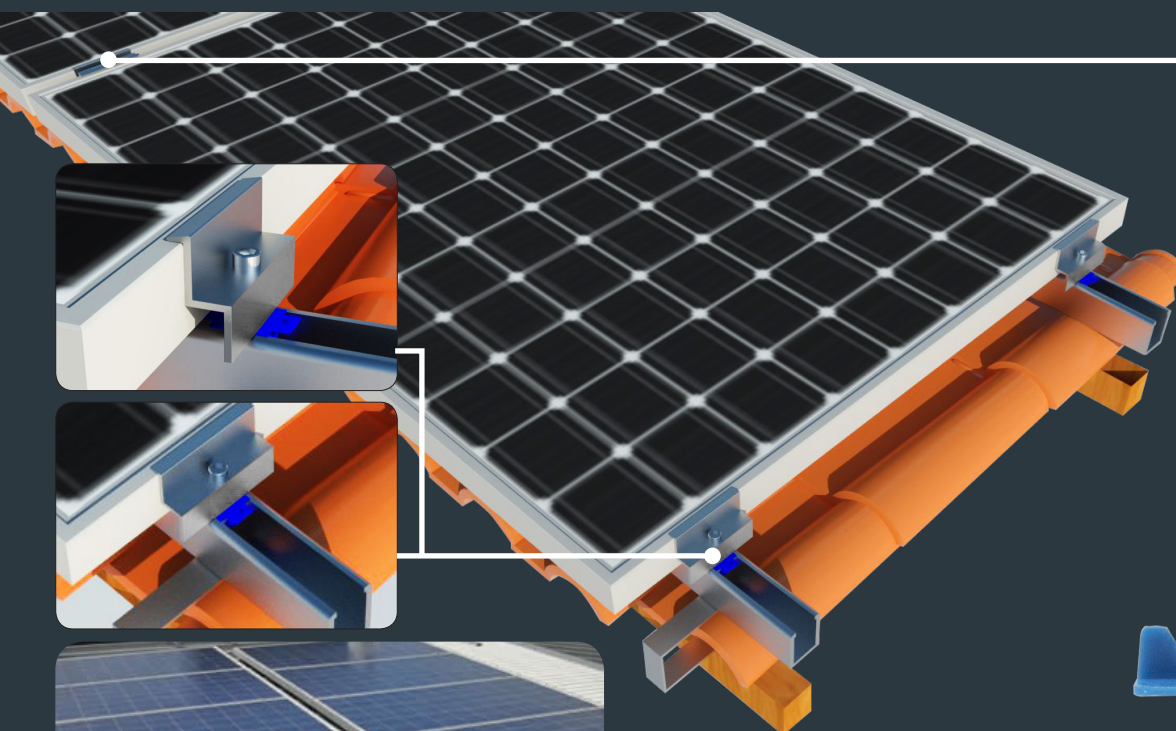




SISTEMAS DE FIXAÇÃO PARA PAINÉIS FOTOVOLTAICOS

FIABILIDADE E DURABILIDADE



+ FÁCIL DE MONTAR

+ ELEVADA RESISTÊNCIA À CORROSÃO

+ SEGURO E FIÁVEL

Acessórios disponíveis:



Fixador intermédio (Alumínio)



Fixador de Topo (Alumínio)



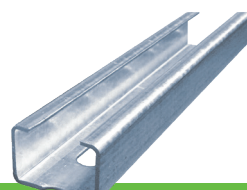
Porca c/ Aba Plástica p/ Parafuso M8



Parafuso DIN912 / DIN7380 (Geomet)



Calha Perfurada Reforçada Galvanizada

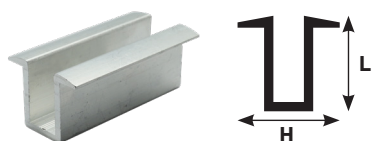
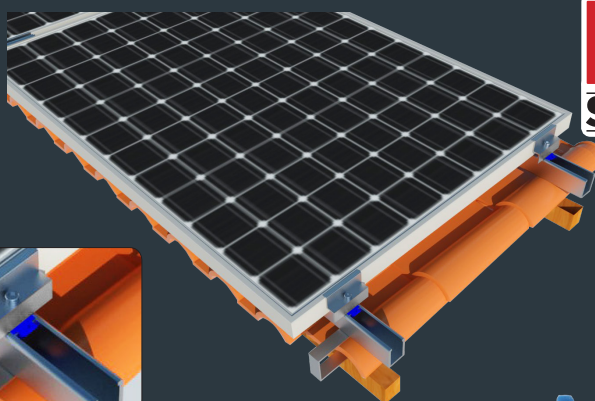
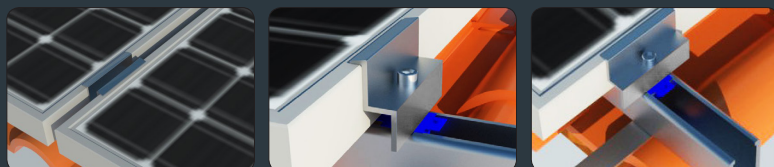


Calha Perfurada Galvanizada



A ESCOLHA DOS ESPECIALISTAS

FIABILIDADE E DURABILIDADE



Fixador Intermédio Alumínio

ESPESSURA	H	L
3 ± 0,2mm	26mm	35,5mm



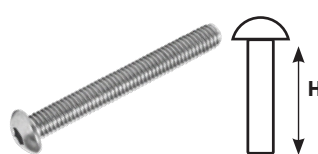
Fixador de Topo de Alumínio

ESPESSURA	H	L
2 ± 0,15mm	30mm	35mm
2 ± 0,15mm	30mm	40mm
2 ± 0,15mm	30mm	45mm



Parafuso DIN912

DIÂMETRO	H
M8	35mm
M8	40mm
M8	45mm



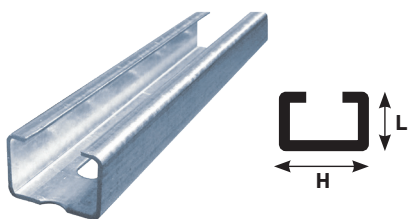
Parafuso DIN7380

DIÂMETRO	H
M8	35mm
M8	40mm
M8	45mm



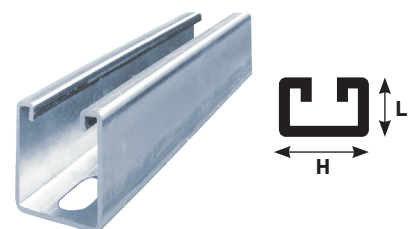
Porca com Aba Plástica p/ Parafuso M8

DESCRIÇÃO
Aba Plástica
Porca p/ Parafuso M8



Calha Perfurada Galvanizada

COMPRIMENTO	L	H	ESPESSURA
2000mm	27mm	18mm	1,25mm
2000mm	28mm	30mm	1,80mm
2000mm	38mm	40mm	2,00mm
2000mm	40mm	20mm	1,50mm



Calha Perfurada Reforçada Galvanizada

COMPRIMENTO	L	H	ESPESSURA
3mt	41mm	21mm	2,00mm
3mt	41mm	21mm	2,50mm
3mt	41mm	41mm	1,50mm
3mt	41mm	41mm	2,00mm
3mt	41mm	41mm	2,50mm
6mt	41mm	41mm	1,50mm

A ESCOLHA DOS ESPECIALISTAS