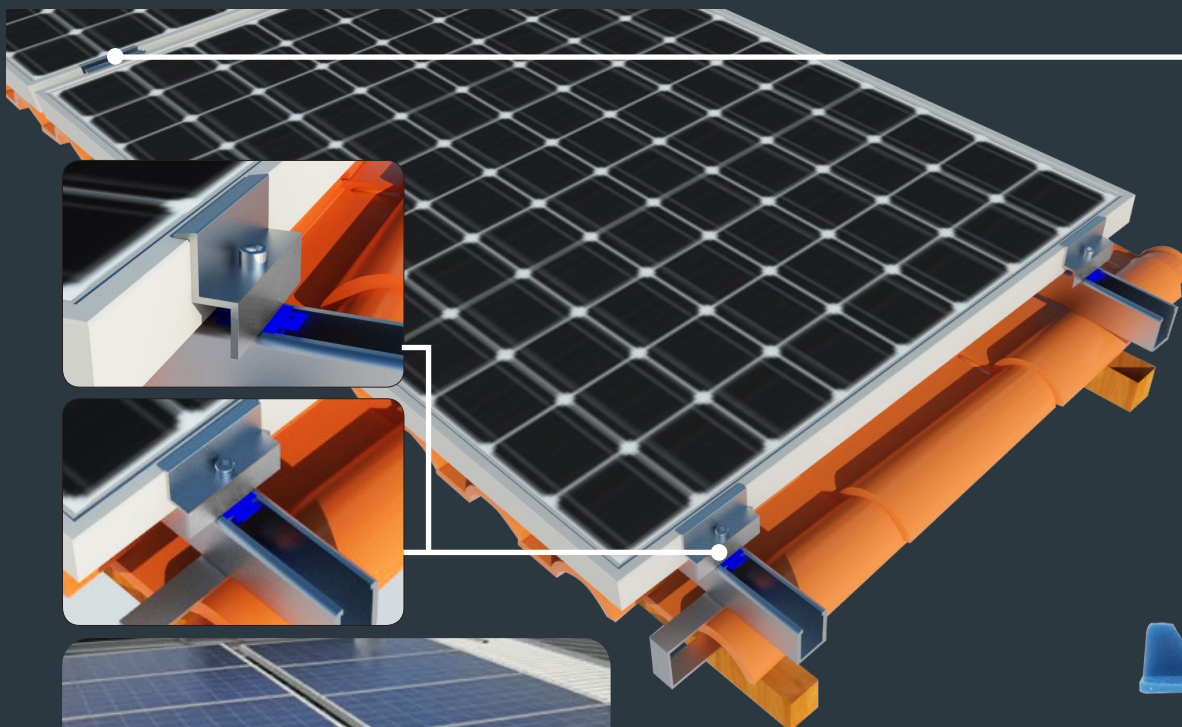




FIXING SYSTEMS FOR SOLAR PANELS

**RELIABILITY
AND DURABILITY**



- + EASY TO APPLY**
- + HIGH CORROSION RESISTANCE**
- + SAFE AND RELIABLE**

AVAILABLE ACCESSORIES:



Aluminum Central Fixing Part



Side Aluminum Fixing Part



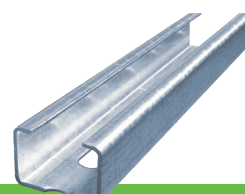
Nut with Plastic Washer for M8 Screws



DIN912 / DIN7380 Screws (Geomet)



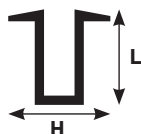
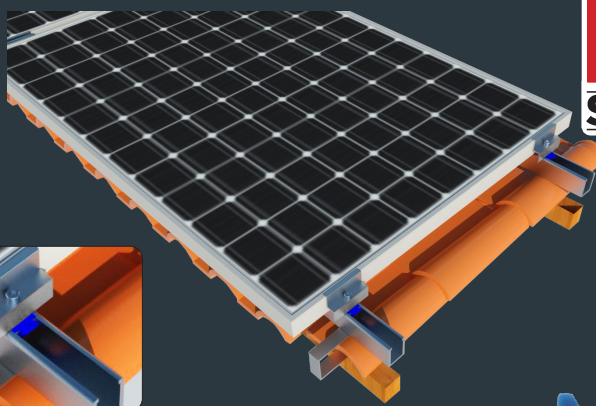
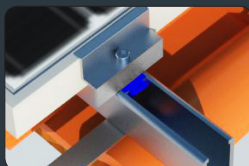
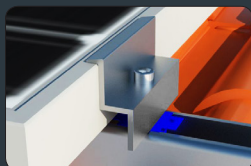
Reinforced Galvanized Profile



Galvanized Profile

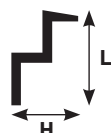
THE EXPERT'S CHOICE

RELIABILITY AND DURABILITY



Aluminum Central Fixing Part

THICKNESS	H	L
3 ± 0,2mm	26mm	35,5mm



Side Aluminum Fixing Part

THICKNESS	H	L
2 ± 0,15mm	30mm	35mm
2 ± 0,15mm	30mm	40mm
2 ± 0,15mm	30mm	45mm



DIN912 Screw

DIAMETER	H
M8	35mm
M8	40mm
M8	45mm



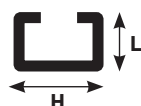
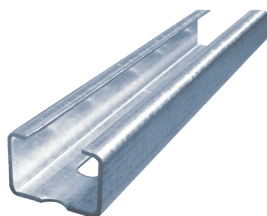
DIN7380 Screw

DIAMETER	H
M8	35mm
M8	40mm
M8	45mm



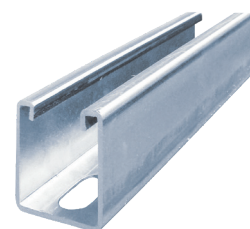
Nut with Plastic Washer for M8 Screws

DESCRIPTION
Plastic Washer
Nut for M8 Screws



Galvanized Profile

LENGTH	L	H	THICKNESS
2000mm	27mm	18mm	1,25mm
2000mm	28mm	30mm	1,80mm
2000mm	38mm	40mm	2,00mm
2000mm	40mm	20mm	1,50mm



Reinforced Galvanized Profile

LENGTH	L	H	THICKNESS
3mt	41mm	21mm	2,00mm
3mt	41mm	21mm	2,50mm
3mt	41mm	41mm	1,50mm
3mt	41mm	41mm	2,00mm
3mt	41mm	41mm	2,50mm
6mt	41mm	41mm	1,50mm